

GIS in Austrian Policing

Methods and experiences



Who am I ?

- Chief Inspector Friedrich „Sam“ Steiner, born in 1961, sworn Police Officer since 1980, starting on the streets of Vienna
- Undercover Agent against Drugs from 1983 to 1986
- Detective from 1986 since 2005 on different drug units in Austria until 2005 (part time undercover agent against left wing crime)
- Since 2005 head of styrian crime analysis unit
- IACA International Symposium chair (www.iaca.net)

Austrian Crime Analysis Structure

Analysis Unit at the Central Intelligence Division (BK)

- **Responsible for national and international affairs**
- **Special GIS group**
- **Professional responsibility for all Austrian units**

Analysis Units in every State Intelligence Division (LKA)

- **Responsible for state and local affairs**
- **Specially trained GIS staff**
- **Close cooperation with BK**

Some task areas for GIS applications

- **Crime Mapping**
- **Predictive Policing**
- **CDR Mapping**
- **GPS Mapping**
- **Distance search for unsolved crimes**

Some useful types of mapping

- **Dots**

to display coordinate pairs of offenses, movements and other events

- **Density**

to display crime densities in certain areas, but also to visualize predictions regarding crime trends.

- **Other mapping types**

for special tasks, such as for displaying repressions

What we use:

- **ArcGIS 10.* (ArcMAP)**

Developing and publishing maps for all upcoming tasks

- **Geotime 5.***

Analyzing geocoded data in spatial and temporal association

Where are we now?

- **Highly trained staff**

uses GIS in different proven ways

for analyzing and displaying crime

both in strategic as well as in the operational area

Where should we go?

Develop and provide predictive GIS applications,

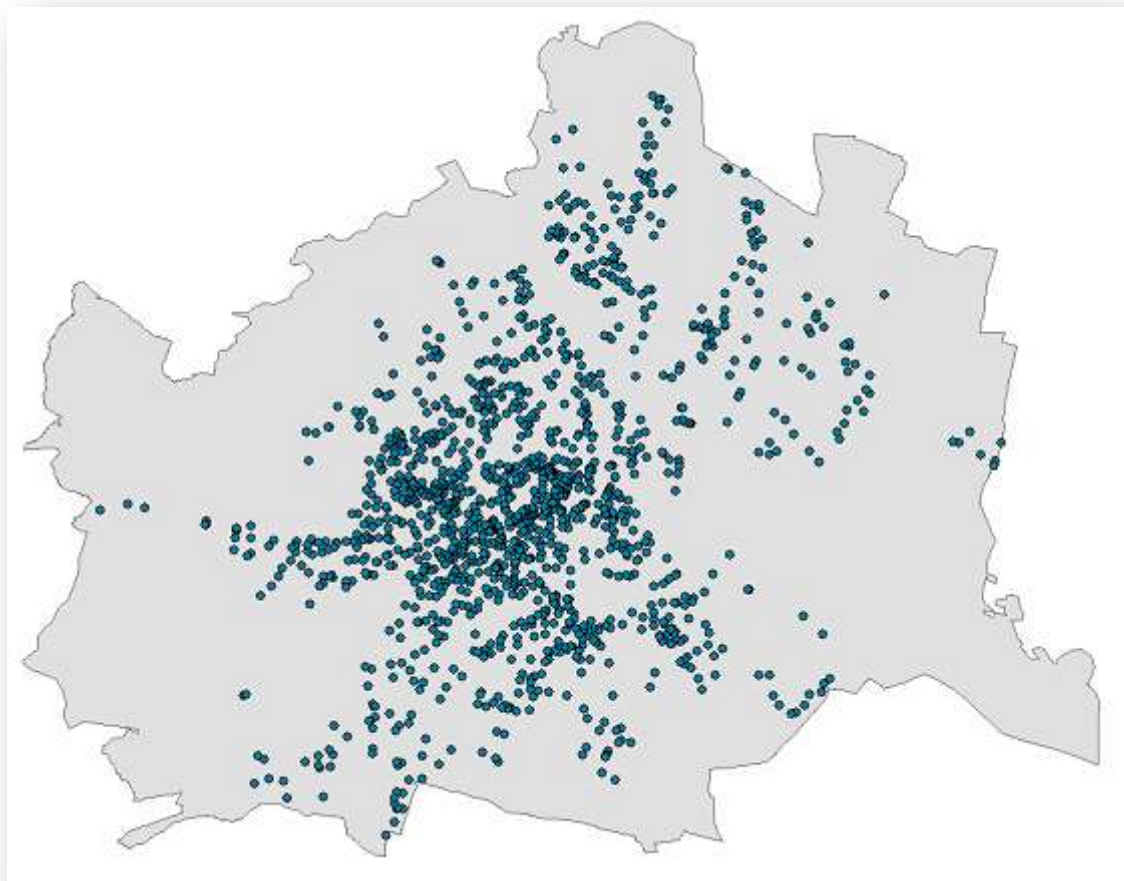
Improve GIS training

(basic knowledge/optimum utilization of program features)

to make our GIS analysts work more

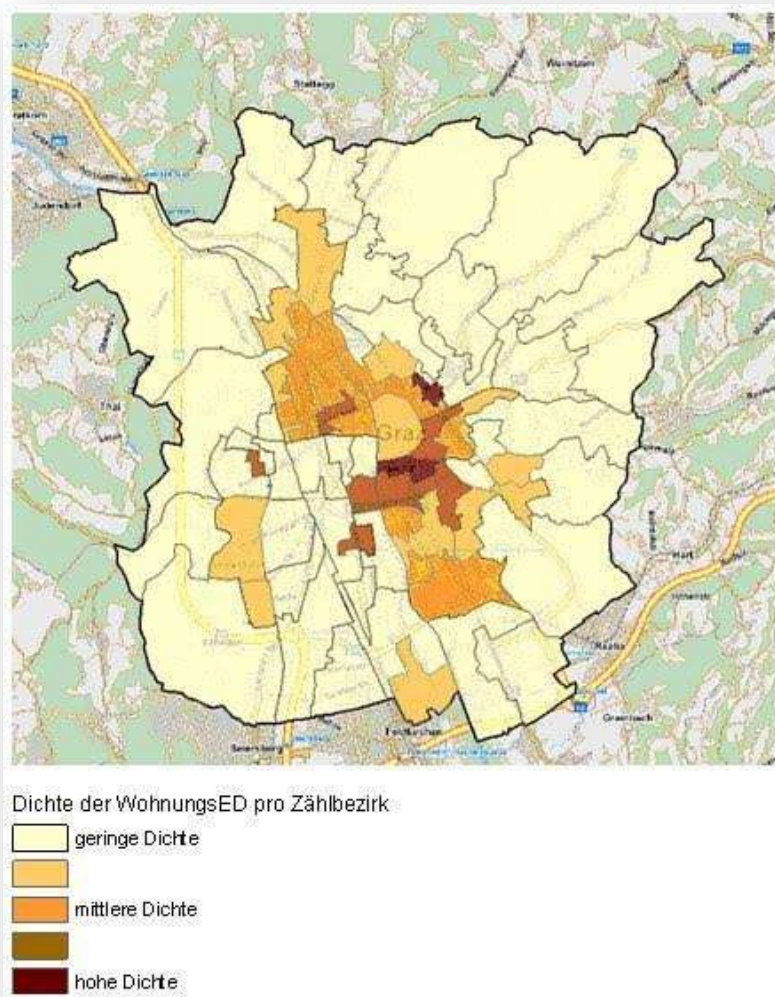
efficiently and effectively

Examples



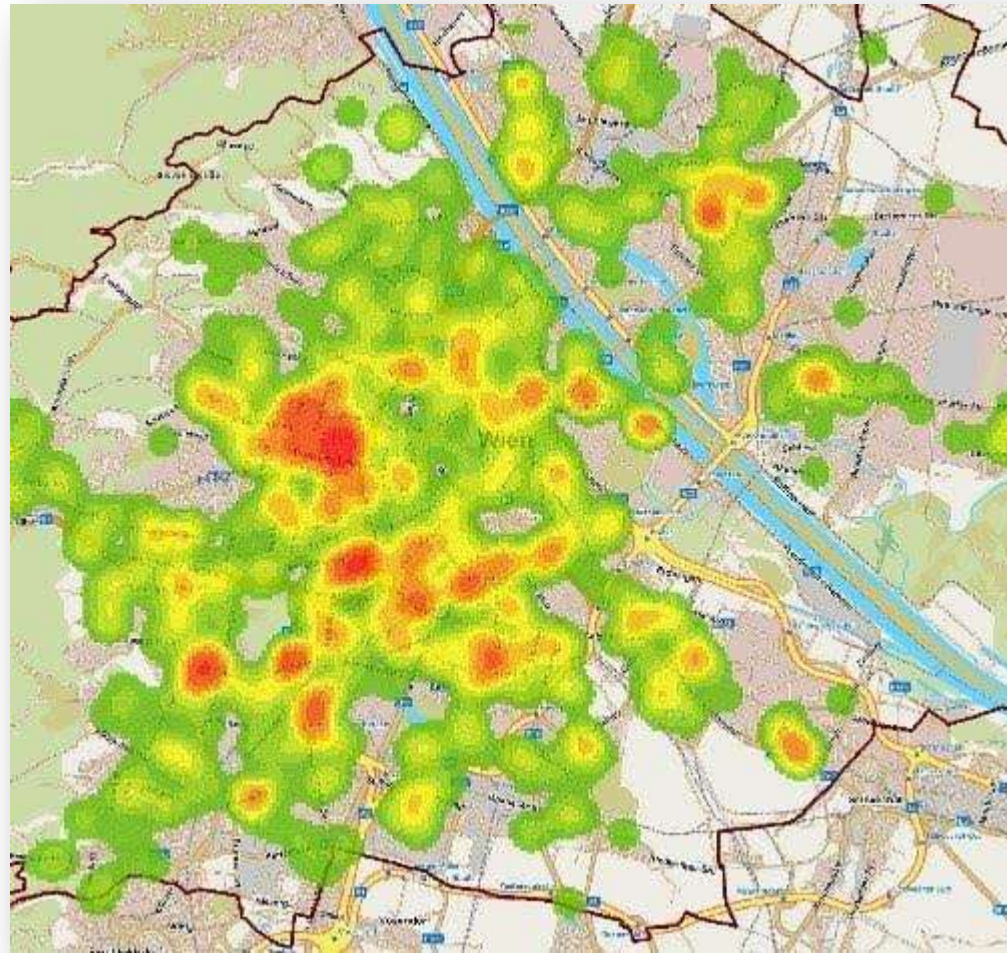
Vehicle thefts
Vienna
February 2007
N ~ 1800

Examples



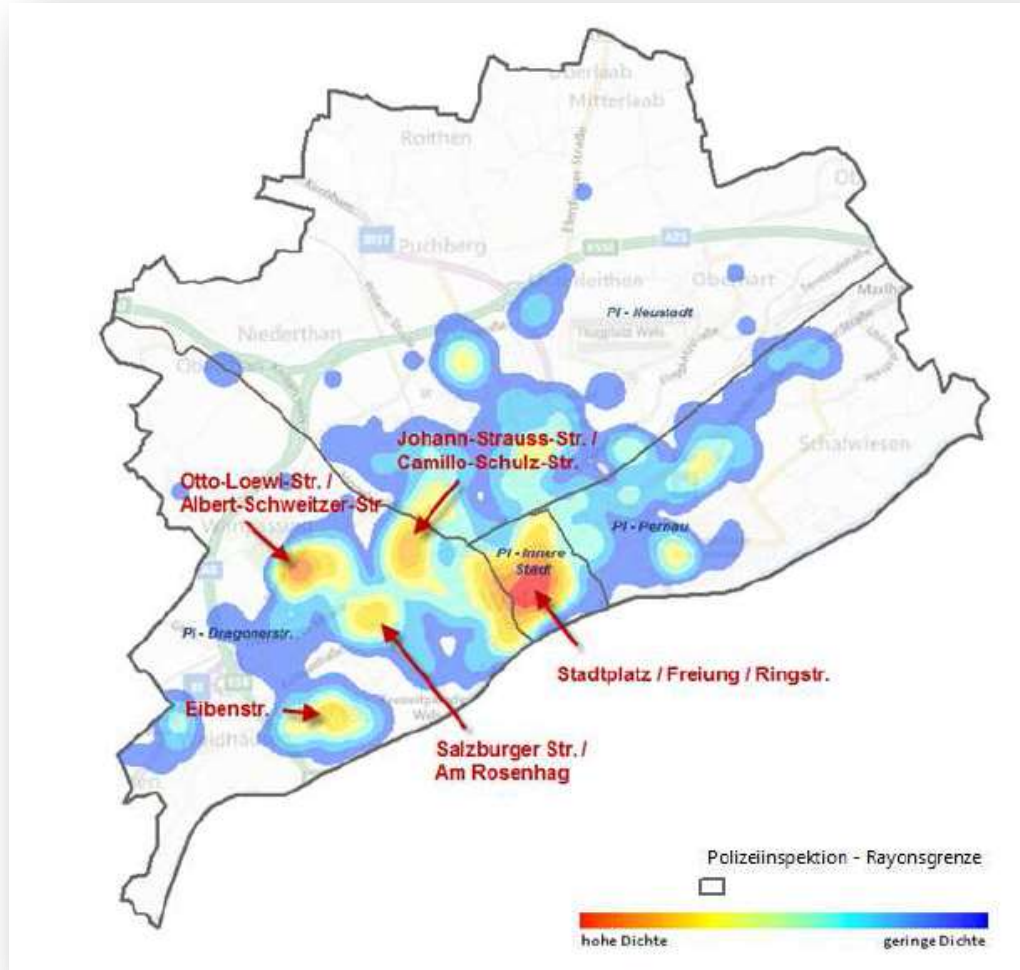
Choroplete
Mapping

Examples



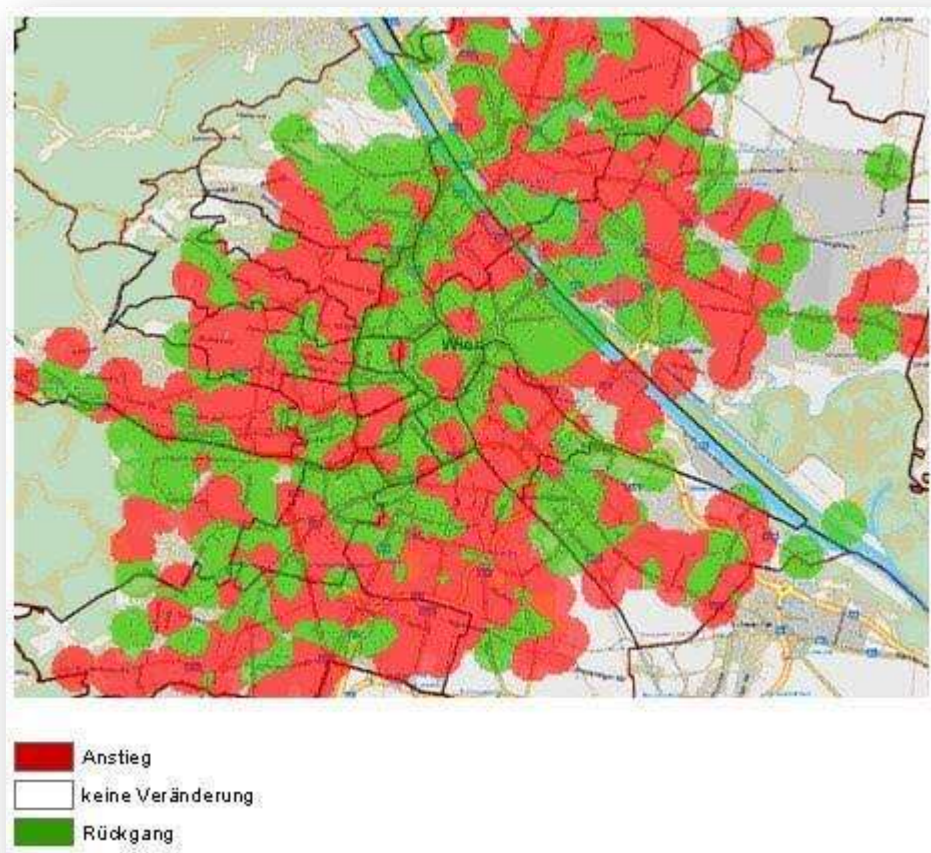
Density
Mapping

Examples



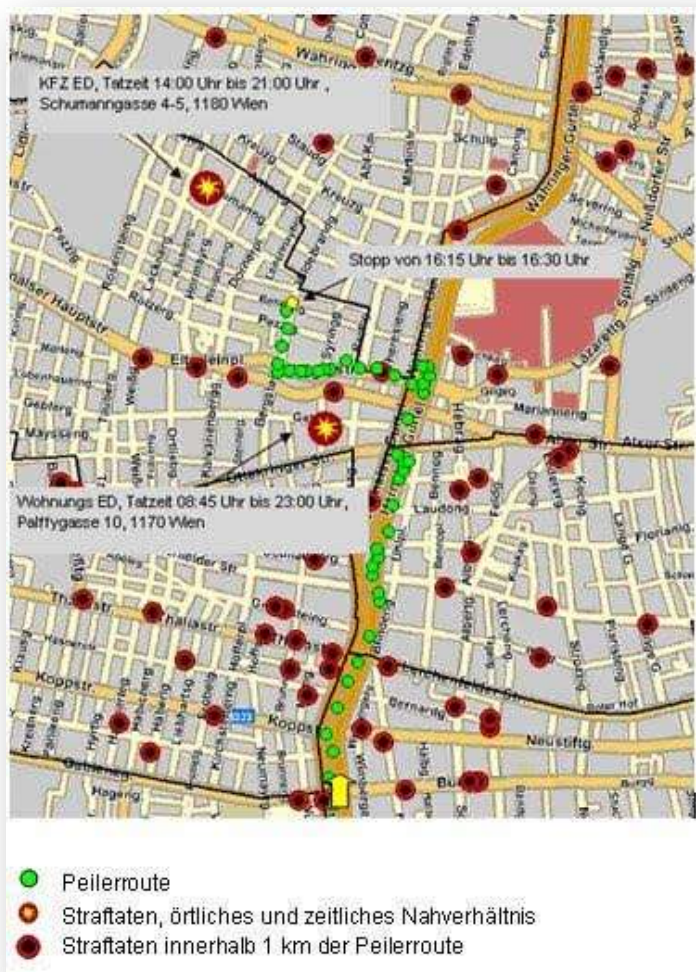
Density of crime
in City of Salzburg

Examples



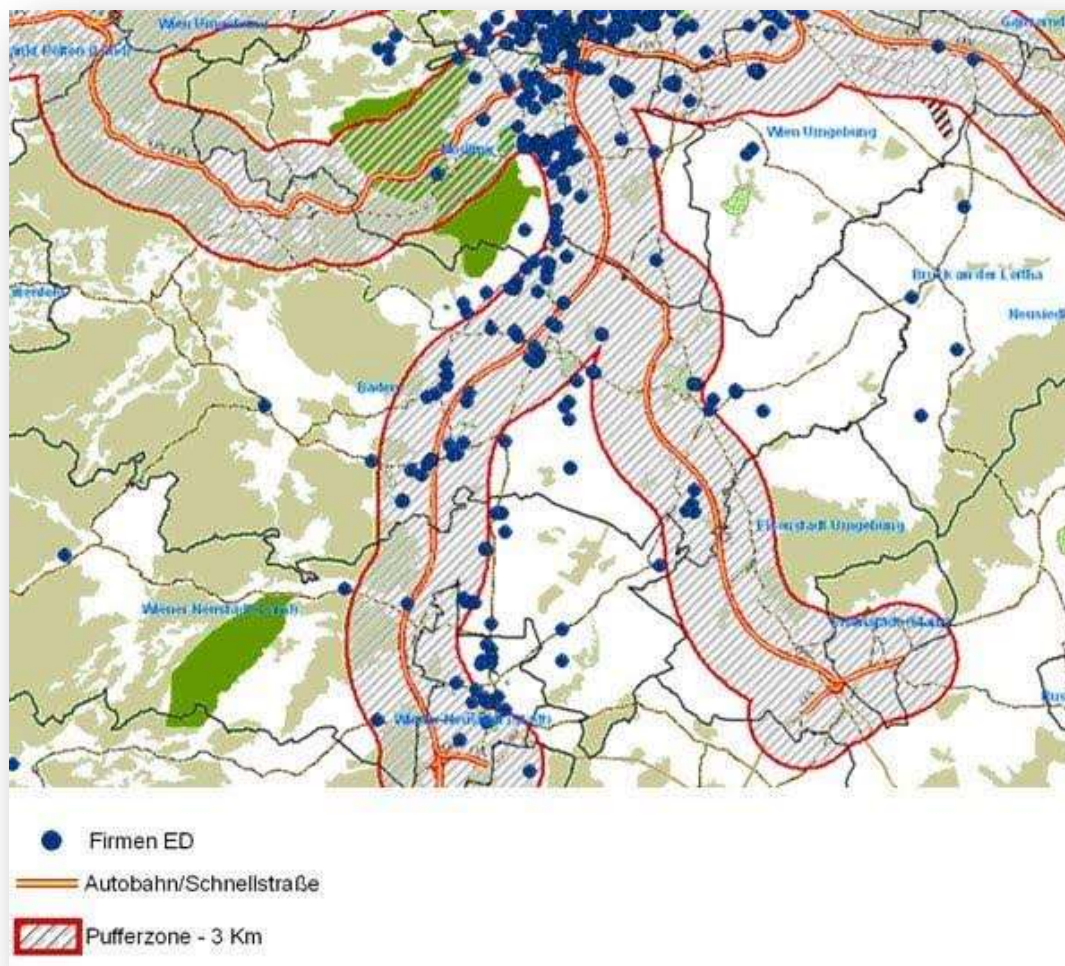
Cut and Fill
Mapping

Examples



Track
Mapping

Examples



Buffer zone
Mapping

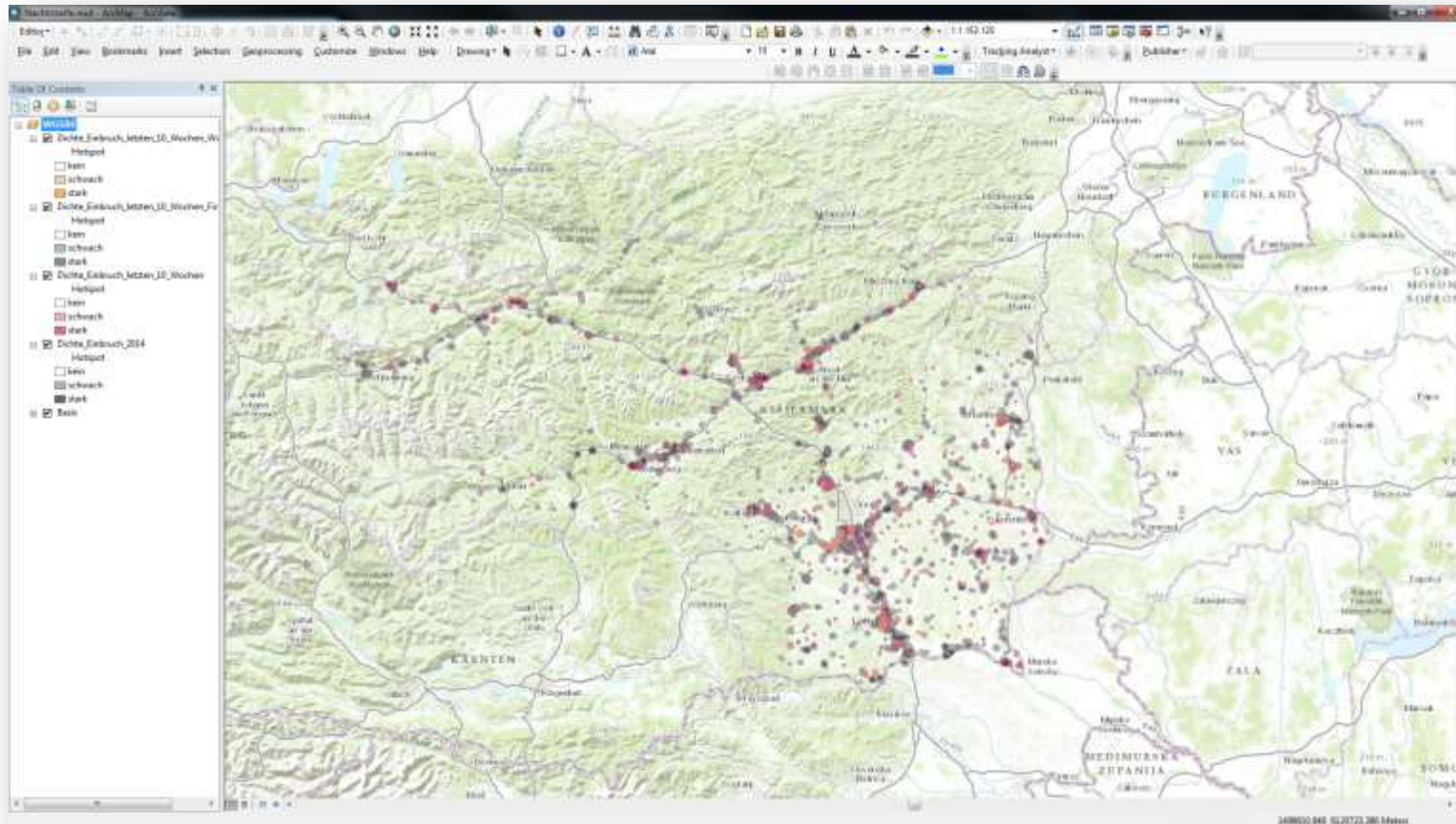
Examples

Drug trafficking

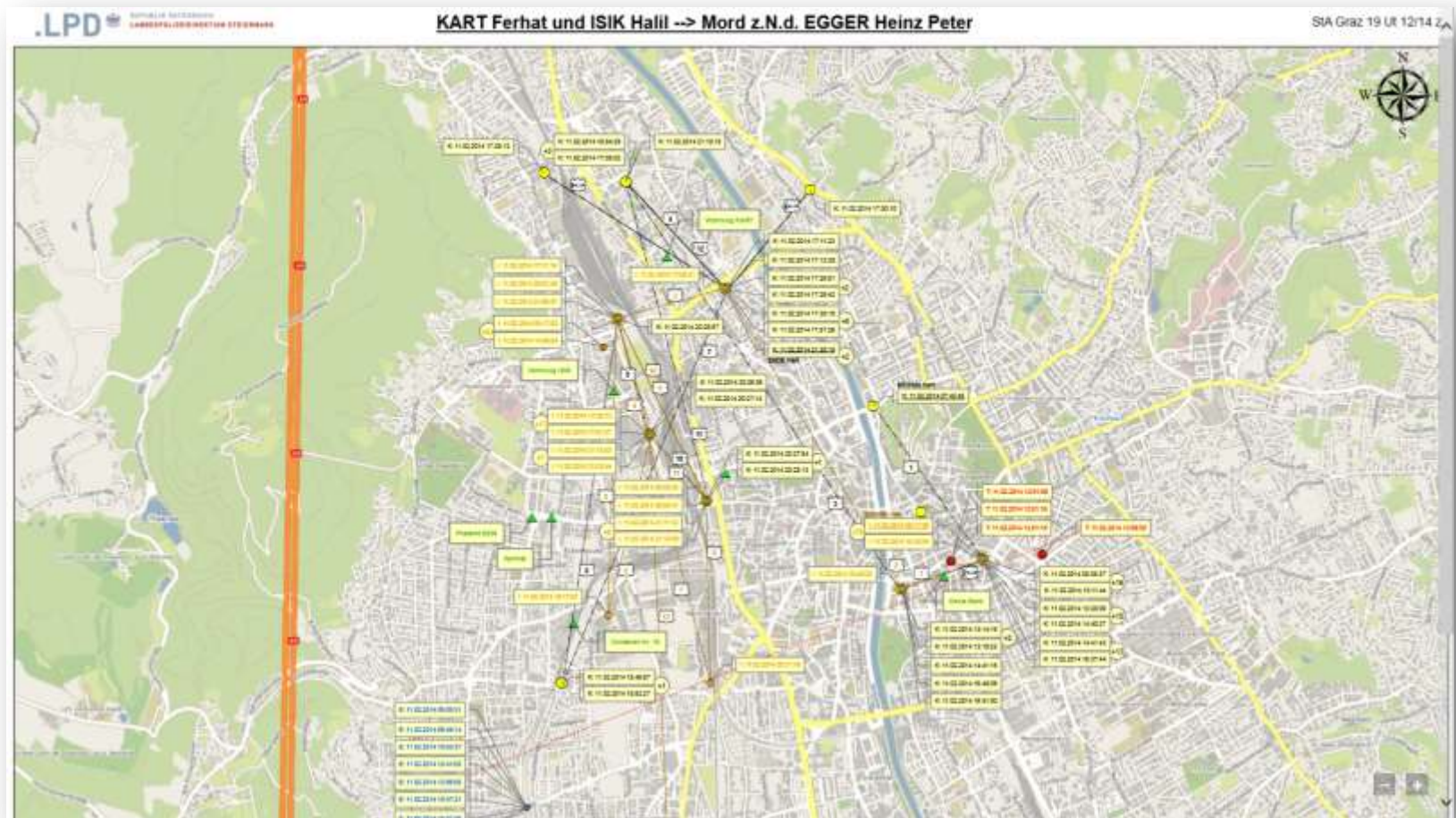


Examples

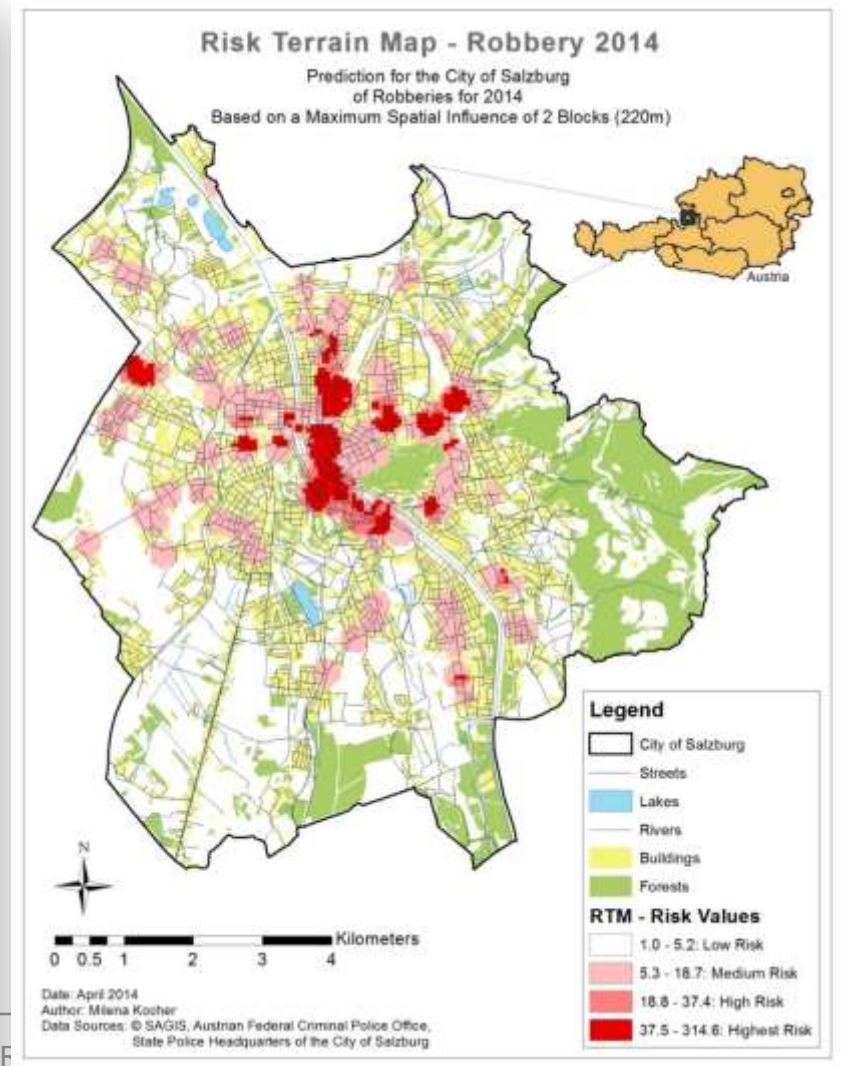
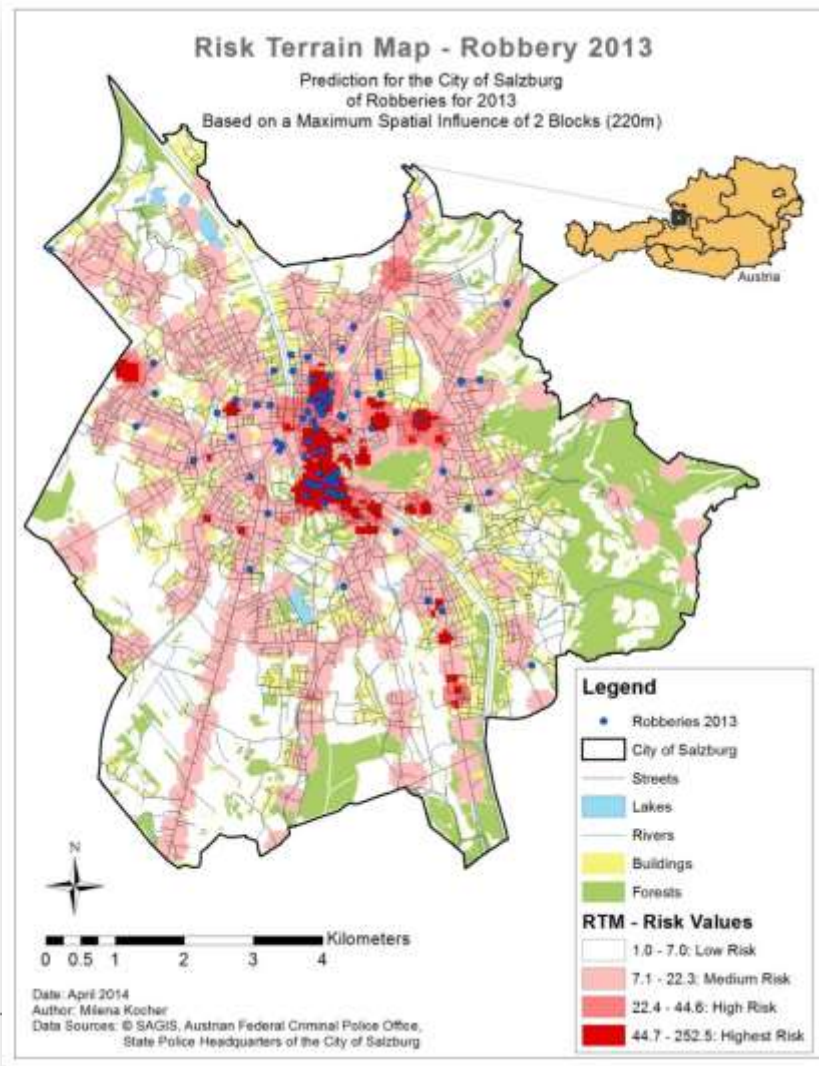
Density of burglaries



Examples

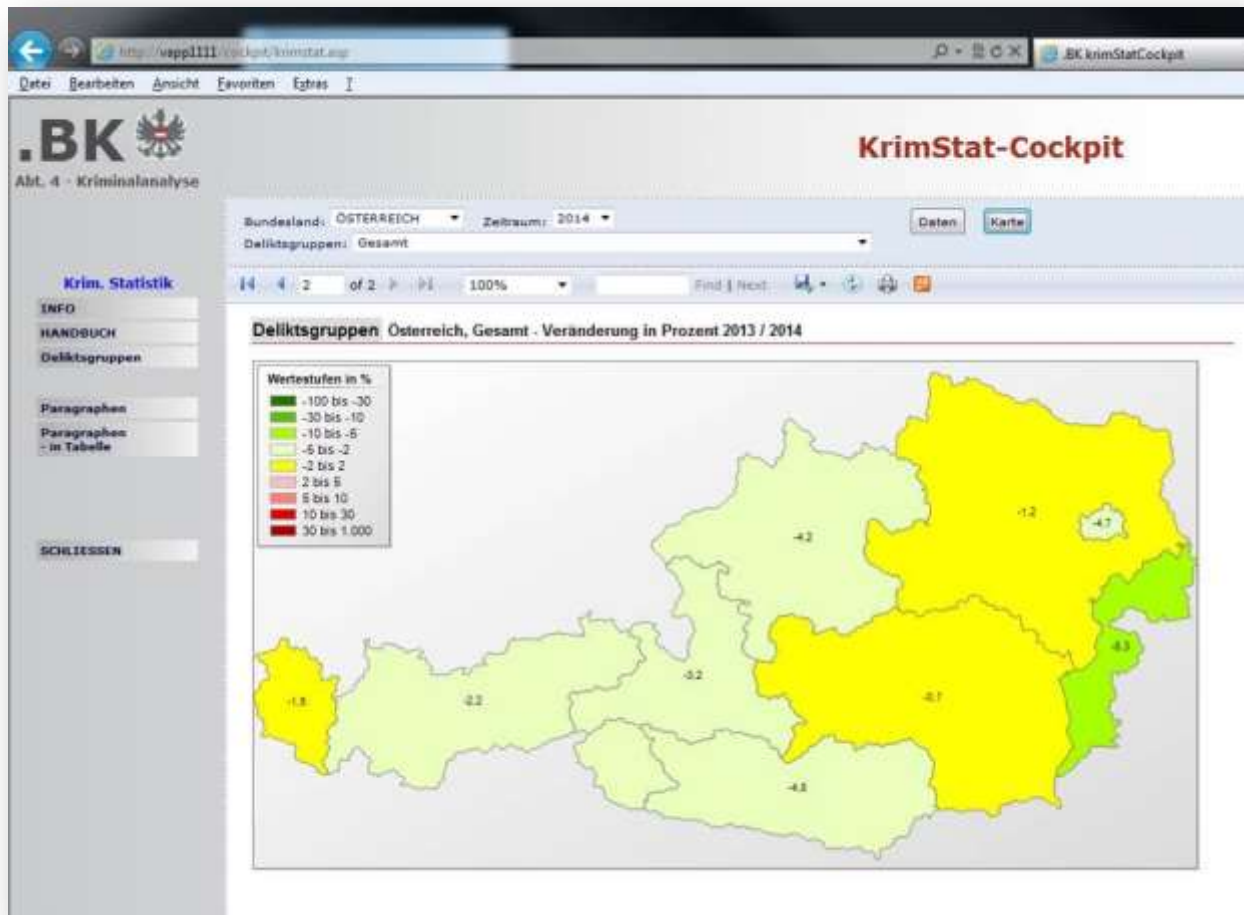


Examples

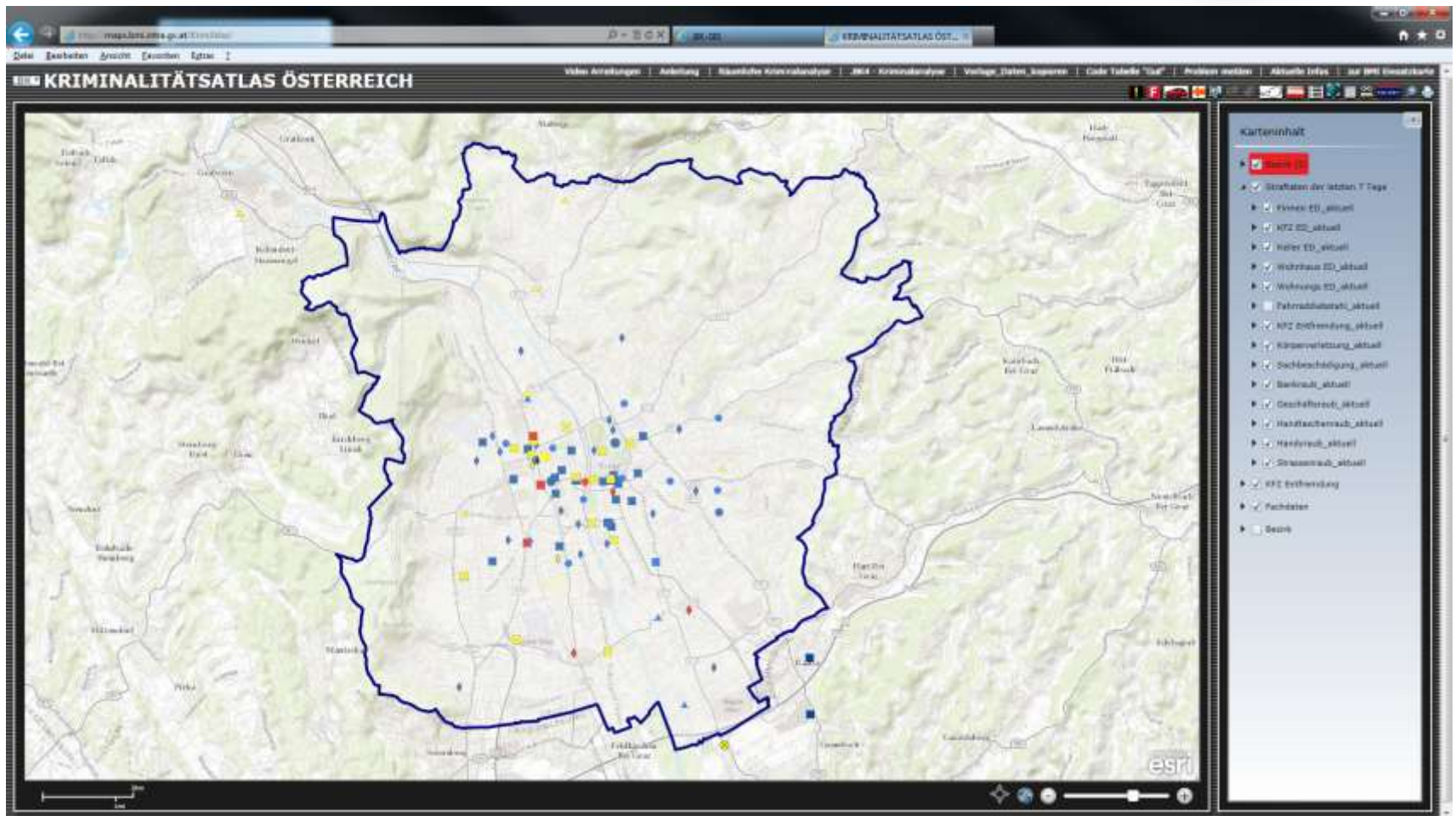


Examples

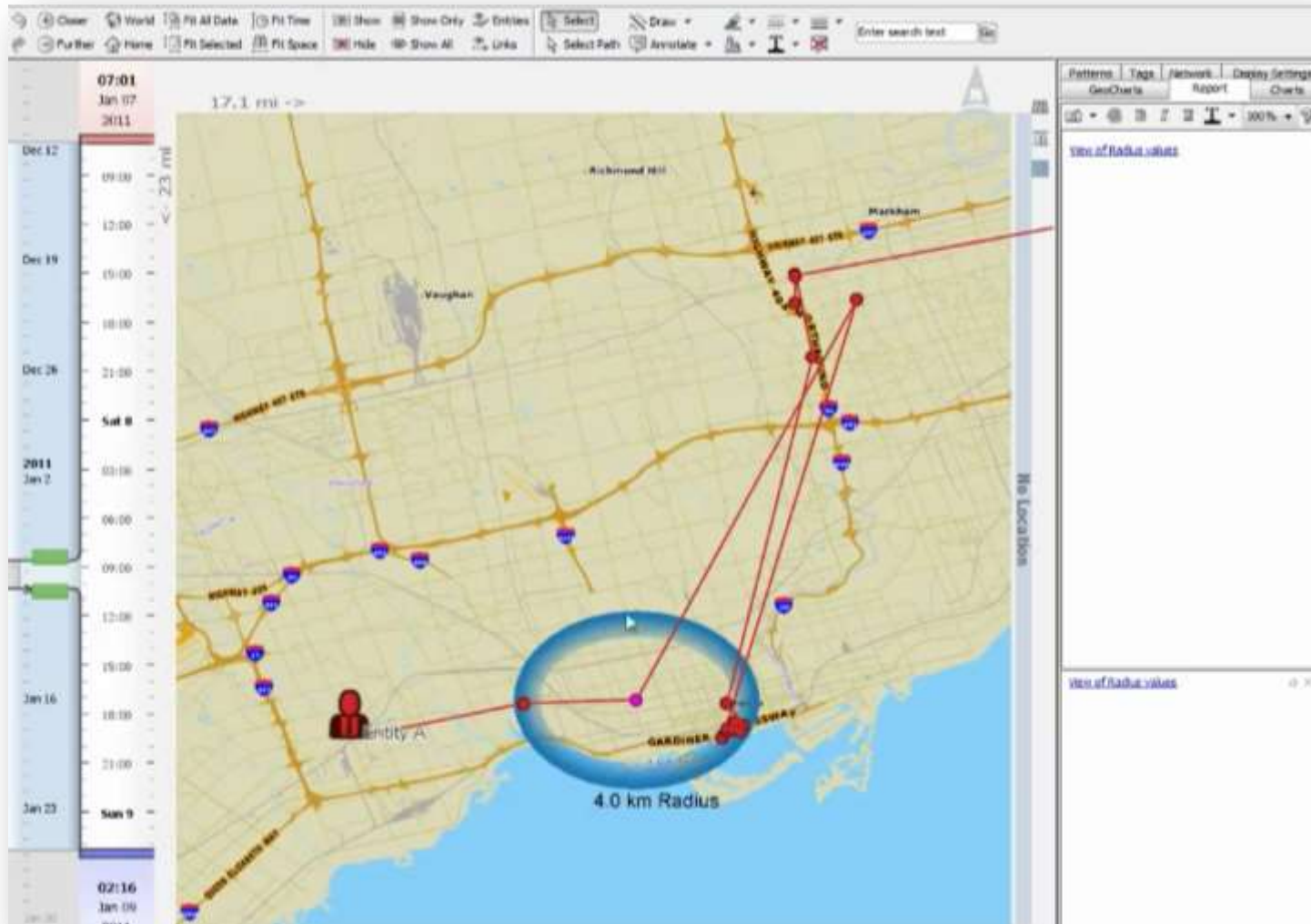
Online
Crime Statistics



Examples



Examples



Geotime 5.6

Friedrich „Sam“ Steiner

Chief Inspector

Austrian Federal Police Styria

friedrich.steiner@polizei.gv.at

+43 664 823 89 25