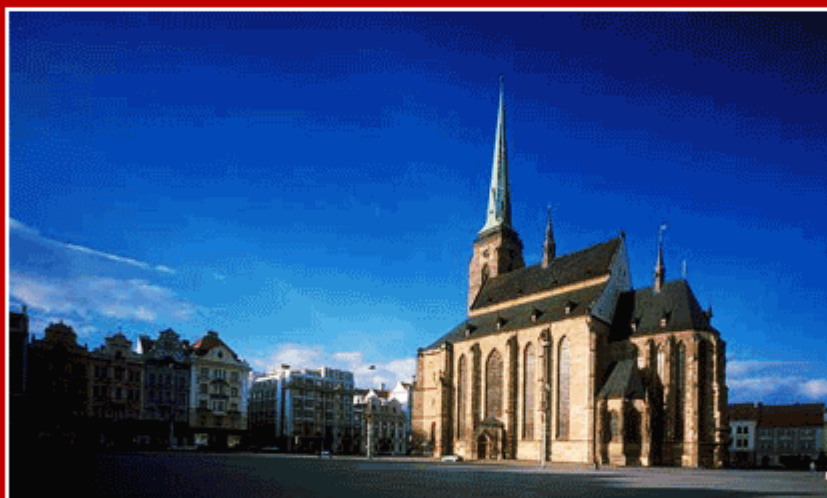


PRESENTATION 732 - JUNE 2009

# WHO ARE SEXWORKERS IN THE CZECH REPUBLIC ? OR SELECTED INFORMATION ABOUT SWS COLLECTED BY NGO BLISS WITHOUT RISK



**PREVENTING AND COMBATING  
TRAFFICKING IN HUMAN BEINGS:  
REDUCING PROSTITUTION  
AND SEXUAL EXPLOITATION**



**EXPERT CONFERENCE - Congress Centre Parkhotel Pilsen - 3rd of June, 2008**



**ROZKOŠ BEZ RIZIKA**  
OBČANSKÉ SDRUŽENÍ  
Prevence a léčba sexuálně  
přenosných chorob  
(zkráceně STD/SPI) a HIV / AIDS

**BLISS WITHOUT RISK**  
NONGOVERMENTAL ORGANIZATION  
HIV/AIDS prevention, diagnoses  
and treatment of STI

**Rozkoš bez rizika - PRAHA,**  
Bolzanova 1, 110 00 Praha 1  
Tel.: 224 234 453, 602 180 180  
Fax: 224 236 162  
E-mail:  
kancelar@rozkosbezrizika.cz

**Rozkoš bez rizika - Brno,**  
Vlhká 10, 602 00 Brno  
Tel./Fax: 545 578 565,  
737 525 429  
E-mail: brno@rozkosbezrizia.cz

**Who are Sexworkers  
in the Czech Republic?**

**OR**

**Selected information about SWs  
collected by NgO Bliss without Risk**





# Basic information about NgO Bliss without Risk

Launched in 1992 - Target group are female sexworkers (SWs)

## Aims:

- HIV/AIDS prevention including diagnoses and treatment of STI (sexual transmitted diseases);
- reduction of negative consequences of prostitution;
- protection of SWs Rights.

## Activities:

Health services are provided voluntarily and most of tests are free of charge.

We run:

- medical office in Prague since 1995;
- medical office in Brno since 2005;
- mobile ambulance since 1998.

## Social, educational and cultural activities:

outreach work in 10 regions of the Czech Republic;

networking;

counseling - including social and psychosocial interventions;

playing theatre performed by SWs;



## **International projects:**

### **Project LABAM**

**(mobile clinic - gift of the Czech Republic to the people of Zimbabwe) has not been supported by the Czech government for 5 years. In 2007 LABAM got the second prize at the Agricultural Show in Zimbabwe, financial problems sustains;**

### **Project in Odessa**

**(mobile ambulance – gift of Bliss without Risk to the NGO Belief, Hope, Love) is supported by International HIV/AIDS Alliance. Facing really severe problems (in 2008 they took 268 HIV positive test among SWs in Odessa streets), they ask for moral support.**



## Membership in the international organizations:

**TAMPEP** – unifying organizations helping SWs in EU.  
R-R is Tampep's national coordinator;

**SWAN** – promotion of SWs Rights  
(Central and Eastern Europe + Asia).

### **THE BEST FOR OUR HOMELAND**

Since 24 of Novemeber we started to run  
a new ambulance operating in the Czech Republic.



Who knows what the future will bring ?

**MOBILE LABORATORY GYNEACOLOGICAL AMBULANCE**

# **LABAM**

**This equipment enables diagnoses and treatment  
of sexual transmitted infections, HIV testing and further more...**



**GIFT FROM THE CZECH REPUBLIC  
FOR THE PEOPLE OF ZIMBABWE**

<http://www.rozkosbezrizika.cz>



**The gift from Bliss without Risk to NGO Faith, Hope, Love is now operating in the Odessa district.**



**Our challenge is: when neighbor house is on fire, help him to put it out before the fire burns your house down.**

**The humanitarian project  
“I STILL WANT TO LIVE!”**



Photo: Jan Šibík - Prague



# Finally, Who are Sexworkers Operating in the Czech Republic?

## Demographic data (briefly)

### Age:

they are mostly young, average age is 26 years, according to the long time experience.

### Nationalities:

Sexbusiness remains patriotically, for many years percentage of Czech women among other nationalities is about 60 %. But distribution of other nationalities has changed. First place belongs traditionally to Slovak (12 %) and Ukrainian (12 %) women, but the rest is now different: women from (very) new EU countries have moved to traditional democratic countries and their positions have been very quickly replaced by - for us very exotic – nationalities like: Nigeria, Brazil, Ghana. Those women are generally regarded as victims of trafficking.

### Marital status:

around one half are single, 10 % married, 18 % divorced. But around 1/3 of our clients are single mothers. From them 1/3 has got more than 1 child.





## **Prostitution settings:**

around  $\frac{3}{4}$  work in clubs, 10 - 15% work in the street, 4 % in privates (very hidden population), 3 % escort service and about rest we do not know;

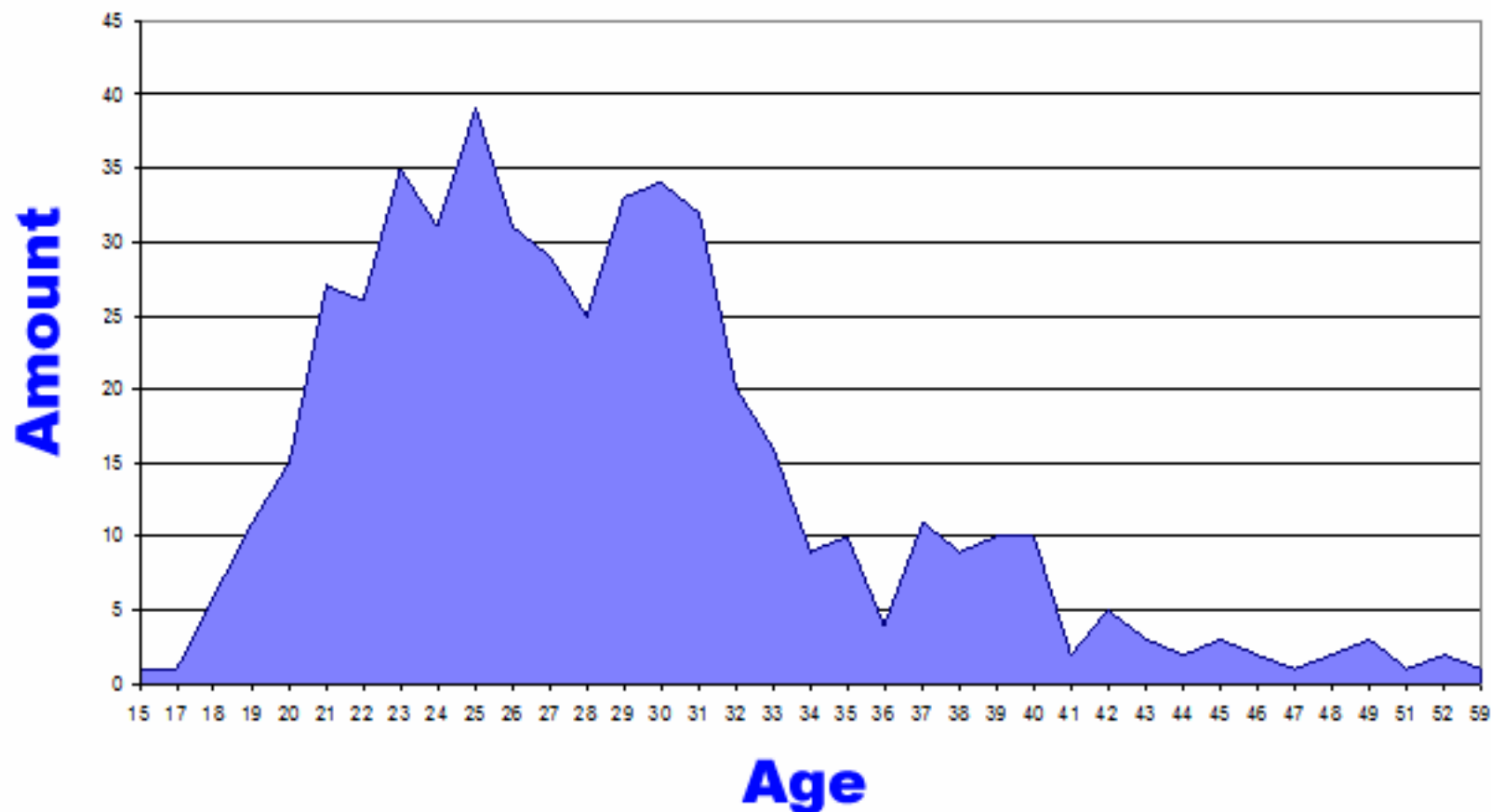
## **Health status**

– due to our permanent care (not only) SWs in the Czech Republic are relatively healthy.

**We do around 1500 - 2000 HIV tests every year,  
from there are 1 to 3 positive cases.  
Incidence of syphilis is rather higher  
varying between 3 to 5 %.**



## Average age of R-R Prague's clients 2008





**Does here exist something that really divides SWs (maybe not only) regardless above mentioned demographic signs or features?**

**Yes, it is a self-reflection.**

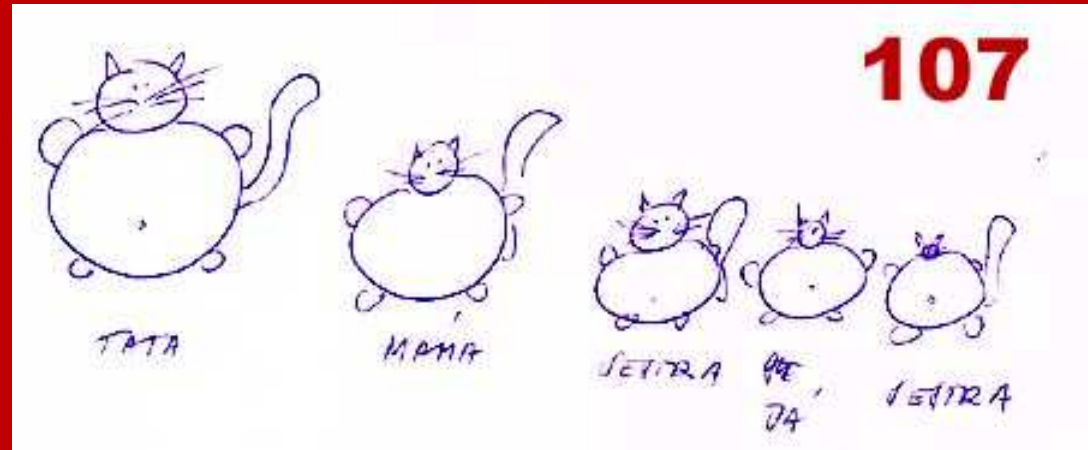
**We asked (Malinova, 2006) SWs to make drawings of their families as animals.**

**Special instruction was: do not forget to draw yourself.**

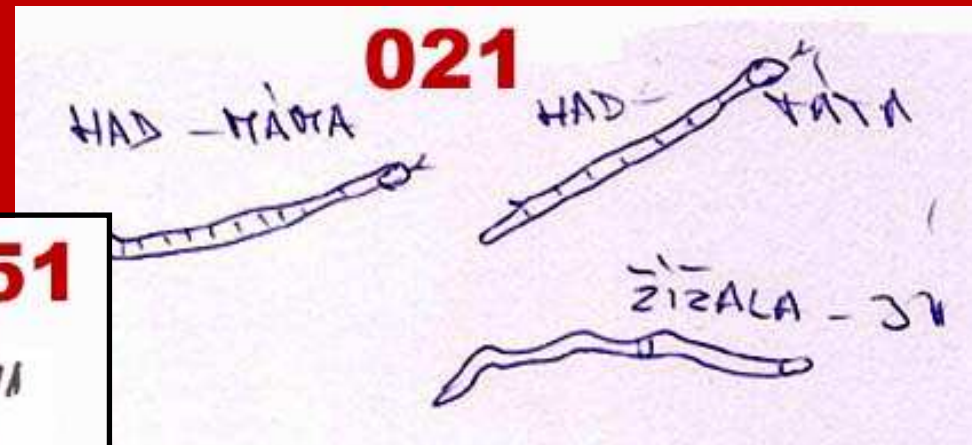
**Some examples of drawings:**



## Happy family with me



## Family with problems but still with me





# Dyads





# No me pictures (without me)





## How ability of self reflection divides SWs?

**Regardless all searched demographic characteristics respondents who were able to draw themselves more often (khi-quadrade test 7.75 \*\*) attend to study or educate themselves in the future.**



# How about their working conditions?

Investigation among SWs in Prague (Polakova, 2008) brought a new light into the situation in prostitution settings. Let see her conclusions:

The biggest risk is the customer's behaving – violent behavior, demands after unprotected sex = with no condom;

Exploitation of the bosses – dividing of profit from the service – 50 % of all cases, no possibility to deny providing the service to the customer;

Foreign SWs did not have worse working conditions than the Czech ones;

Satisfaction outweighs the dissatisfaction with the working condition of SWs.

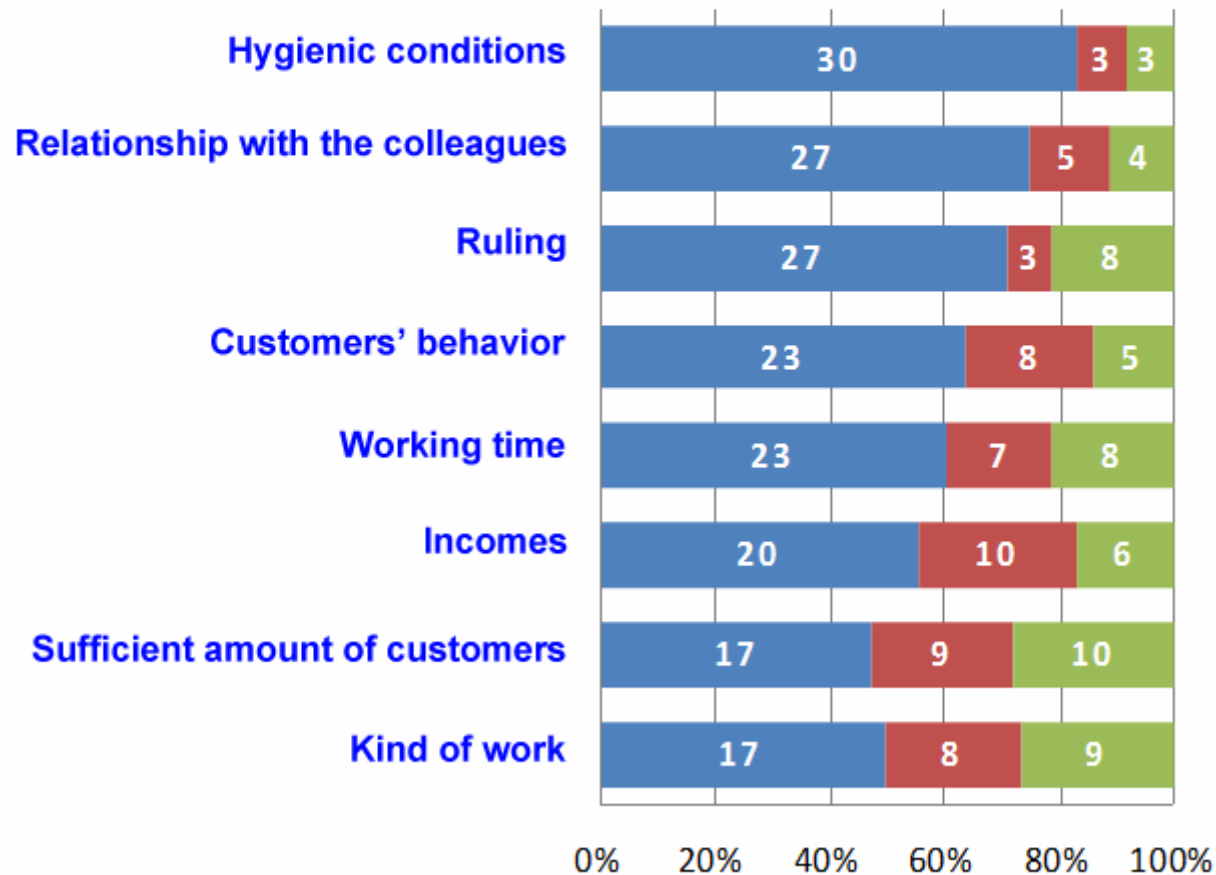
Detailed information about working conditions, what was included, how was each item evaluated?





## Evaluation of working conditions

■ satisfied   ■ neither satisfied nor unsatisfied   ■ unsatisfied





# **As a final top: Is there a relation of SWs to the police and how does it look like?**

**Answer brought investigation provided especially among street sexworkers (Malinova, 2008) who are traditionally more endangered and in closer relation to the policemen.**

**As in the previous investigation the major danger for SWs are customers (68 % cases). Especially truck drivers are known for their brutal behavior to the SWs.**

**Other dangerous persons are introduced rarely::**

**7 times pimps, chiefs, madams**

**5 times hooligans**

**4 times ... lovers, husbands**

**2 times ... police**

**2 times ... other persons in sex business**

**1 times... drug dealer**



## More information about contact with police and authorities:

Contacting police	number of answers	yes	yes (%)
Fine for the prostitution	25	7	28,0
SW was taken to the police station	23	3	13,0
Retention stay	24	6	25,0
Compulsory HIV/other infections testing	21	1	4,8
Threat of declassifying of the personal picture or information	19	1	5,3
Declassifying of the picture or information	16	2	12,5



## Misusing of SWs by police

Event	number of answers	yes	yes (%)
Humiliating by police	23	2	8,6
Forced clean up of the police station	23	1	4,3
Threat of violence by police	24	3	12,5
Forced to have a sex with the policeman	23	1	4,3
Physical cruelty of the policeman	24	1	4,2



## Is the police helping?

Feeling versus reality, What respondent feels and what does in the case of threatening, beating and combating to oral, vaginal or anal sex.

SWs attitude	feeling	reality
No answer at all	1	5
Ask for help of the police	11	5
No police intervention – did not give the reason	6	10
No police intervention – fear of police	1	1
No police intervention – fear of police harassment	0	0
No police intervention – fear of much bigger danger	3	3
No police intervention – fear of police disclosure of being SW	0	0
No police intervention – fear of somebody's disclosure of being SW	3	1



# Messages from SWs to all of us:



**defending prostitution as a mean of profit**  
**expressing of disaffection to the pimps**  
**recommendation of edification of the customers**



***Above mentioned three points are fully in accordance with the R-R's job so it made us rely happy, that the clients themselves summarized the message we are trying to bring.***

**Materials:**

**Malinova, Hana: Yesterday, Today and Tomorrow, Prague 2006. Research of 99 SWs, presented at conferences and seminars.**

**Polakova Jana: How it comes in se clubs in Prague. Prague 2008. Research of 42 SWs is a part of bachelor theses, presented at conferences and seminars.**

**Malinova, Hana: Kat and mouse? Or How is relationship between SWs and Police? Investigation of 24 SWs for International NGO SWAN (*Sexworkers' Rights Advocacy Network*). Gained data gain in the Czech Republic were analyzed exclusively for the Czech Ministry of Interior.**







**Thank you for your attention.**

Grafic layout: Vladimír Steiner