

# PORTUGUESE REPORTING MECHANISM

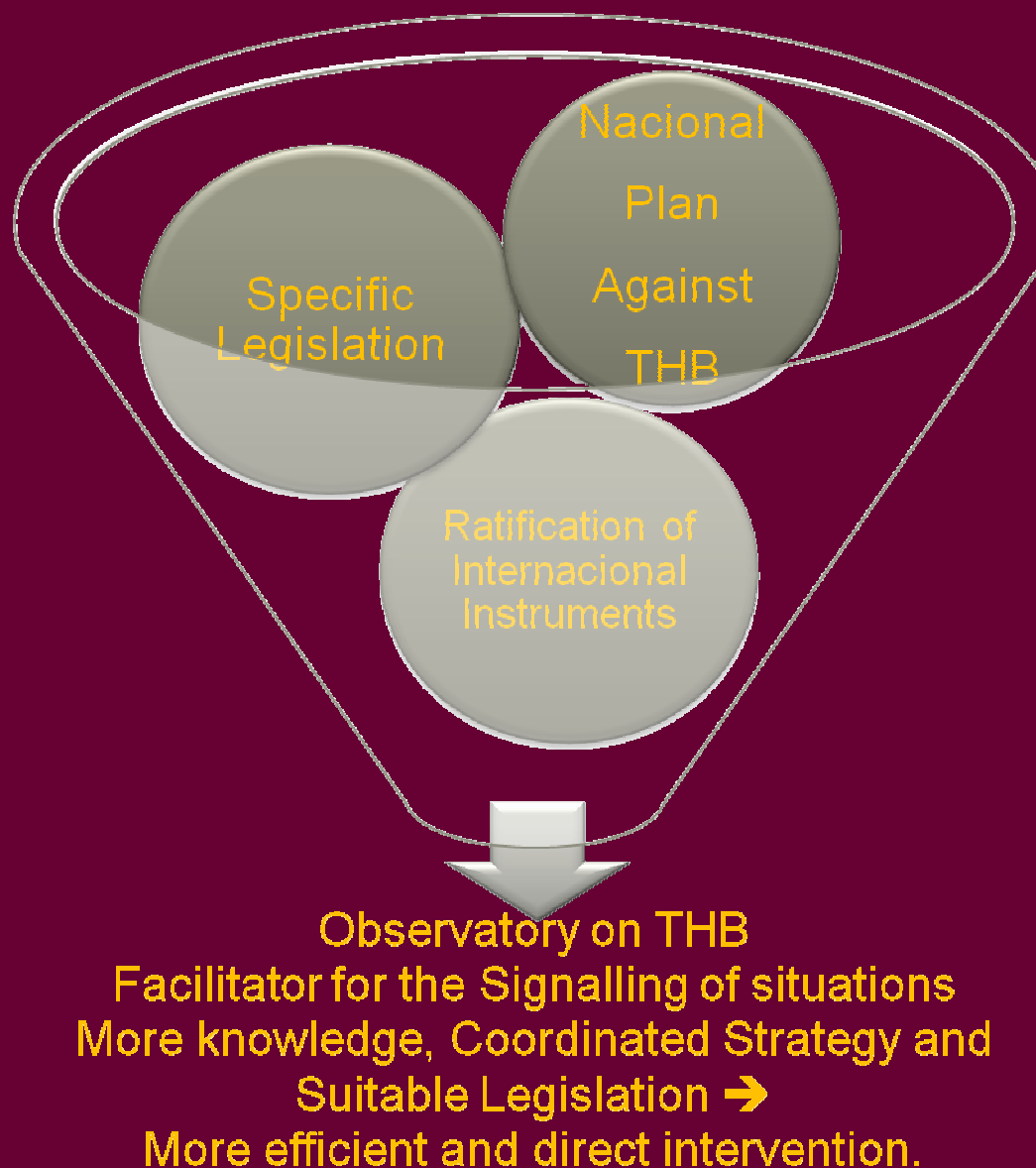


**CONTRA O TRÁFICO  
DE SERES HUMANOS  
AGAINST TRAFFICKING  
IN HUMAN BEINGS**



**Manuel Albano  
National Rapporteur**

# PORTUGAL and the THB



# Reference of International Instruments in Portugal

---

- UN Convention against Transnational Organised Crime and additional protocol related to Prevention, Repression and Punishment of the Traffic in Human Beings, particularly Women and Children, 2000 → Ratified
- Council Framework Decision (2002/629/JHA) of 19 July 2002 on combating trafficking in human beings
- OSCE Action Plan Against to Combat Traffic in Human Beings – 2003
- Council of Europe Convention on Action against Trafficking in Human Beings, 2005 → Ratified
- EU Action Plan on good practices, rules and procedures on traffic in human beings prevention, adopted in 2005

# Portuguese Legislation Framework on THB

---

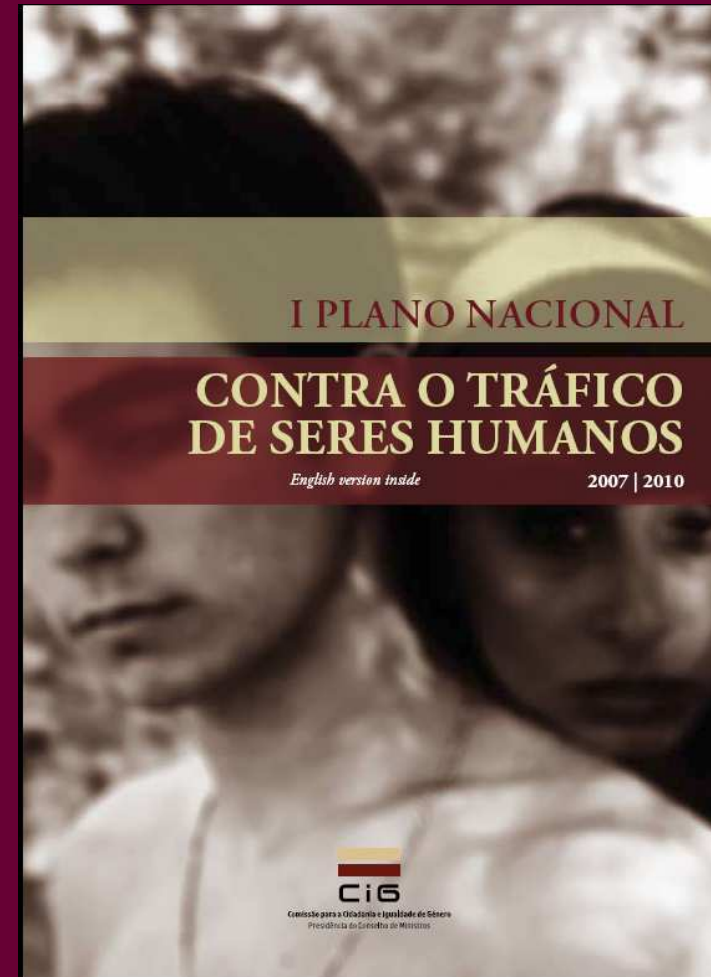
- Law n.º 23/2007, 4 July that “Approves the regulation of entrance, residence, exit and removal of foreigners from the national territory” contains a specific section for victims of crime, with a reflection deadline is foreseen in the case of victims of traffic.
- Inclusion National Action Plan (PNAI), Resolution of the Council of Ministers n.º 166/2006, 15th. of December
- Immigrants Integration Plan (PII), Resolution of the Council of Ministers n.º 63-A/2007, 3rd. Of May
- 1st. National Plan on Traffic in Human Beings, Resolution of the Council of Ministers n.º 51/2007, 28th. Of March

# 1st. National Plan on Traffic in Human Beings

---

The Plan is built as a fundamental instrument to share responsibilities between the governmental institutions and civil society.

Its approach is holistic by joining and accommodating different strategies/dimensions into a coordinated and effective way.



# 1st. National Action Plan Against Trafficking in Human Beings

---



# 1st. NPATHB Coordinator/Rapporteur

---

**Decision n.º 1596/2008, 15th. of January 2008**

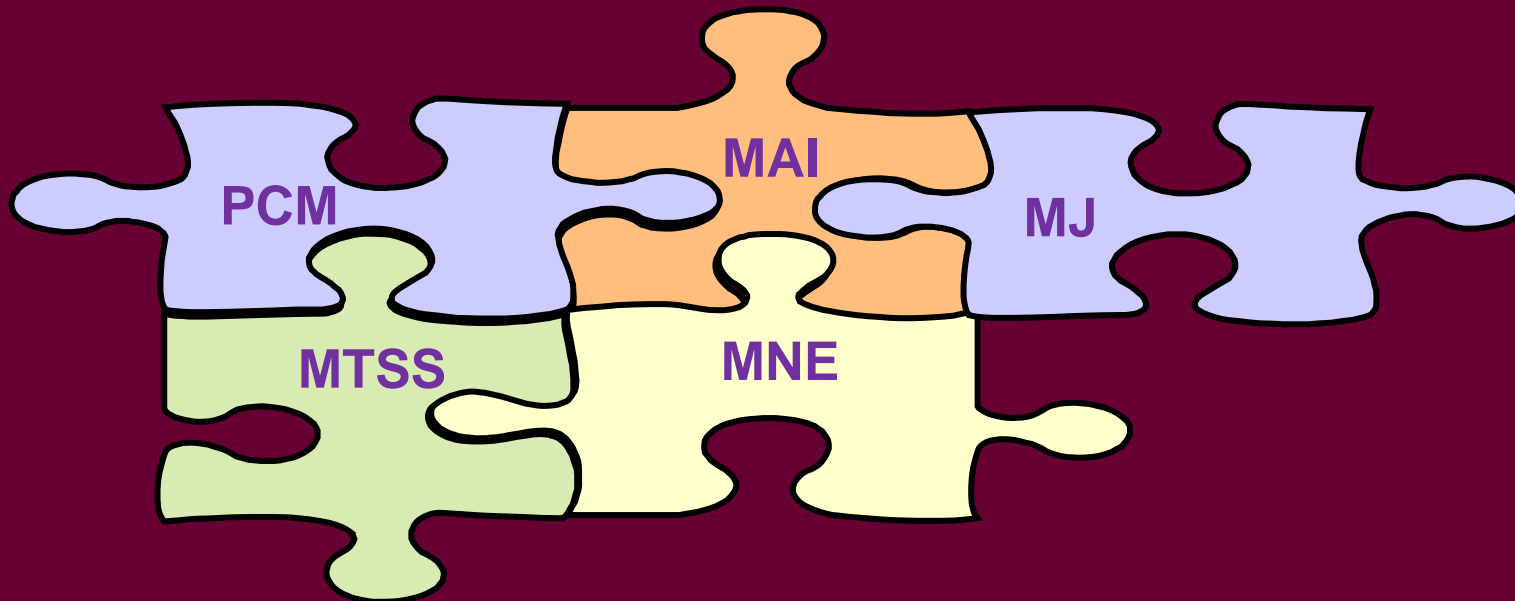
Decides on the Nomination of a Coordinator for the 1st. National Plan on Trafficking in Human Beings who is responsible for National Report on Trafficking in Human Beings

# 1st. NPATHB Coordinator/Rapporteur

---

## Technical Commission that supports the Plan Coordination:

- A Technical Commission has been set up to support the coordination of the 1st. NPATHB, its members are State institutions with responsibility on the subject.





# 1st. NPATHB Coordinator/Rapporteur

---

**Law n.º 229/2008, 27th. November**

- Creates the **Observatory on Traffic in Human Beings**, under the responsibility of the Government Member in charge of internal administration.

Its mission and mandate are coordinated with the National Plan against Traffic in Human Beings Coordinator.



## **Mission**

The Observatory's mission is the production, collection, analysis and dissemination of information related to trafficking in people and other kinds of gender violence.

# Levels of intervention...

---



# Response created: Signalling- Identification-Integration of VTHB

---

**Goal:** To promote full social integration of victims of trafficking through the implementation of mechanisms which will contribute to the requirements setting of suitable structures.

**How?**

Definition of an intervention model particularly addressed to trafficking which will directly or indirectly comprehend all the stakeholders.

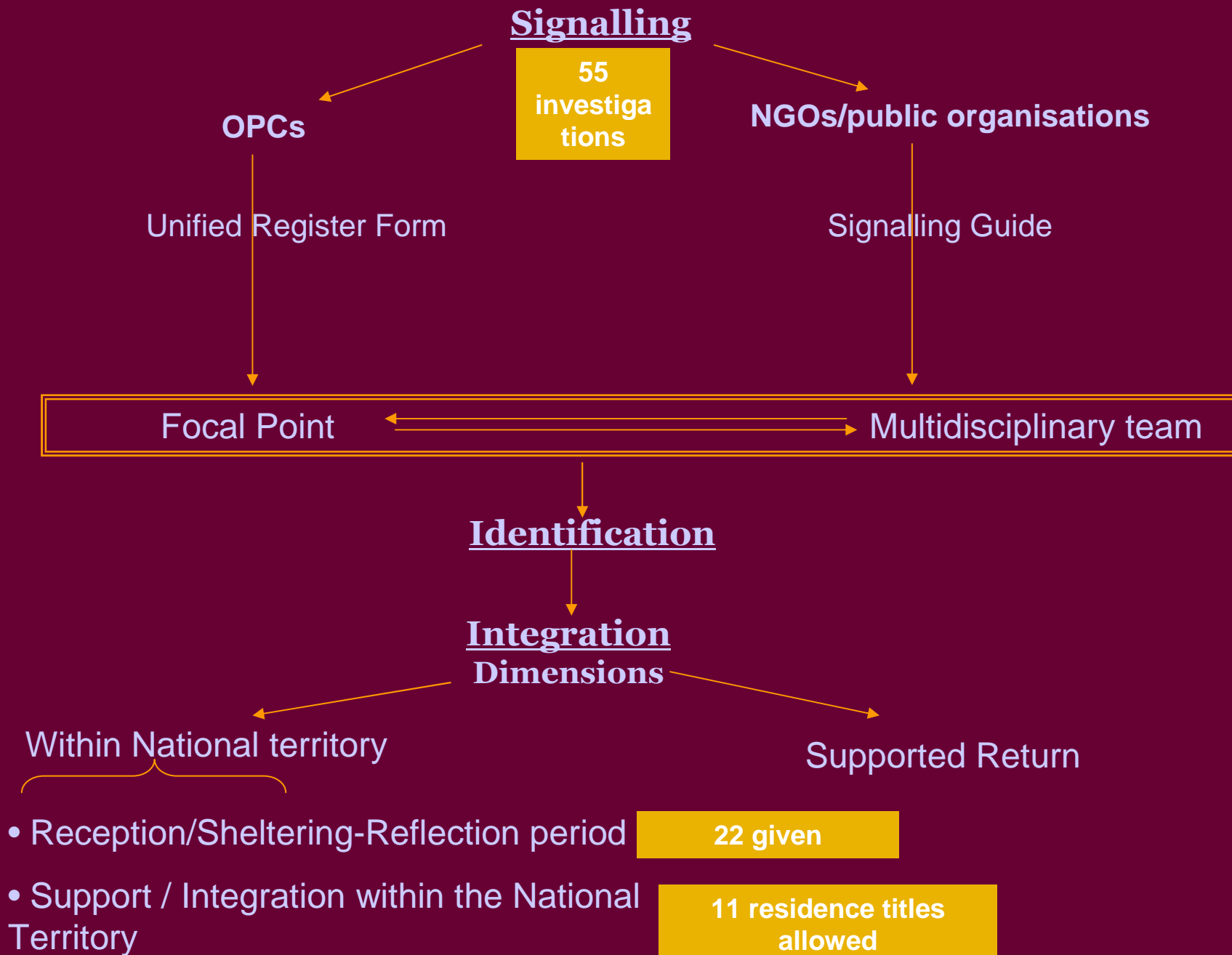
# Response created: Signalling- Identification-Integration of VTHB

---

## Objectives:

- To make available a network response based on research about fighting trafficking and its victims support;
- To give special support to the victims, coordinated with different levels of intervention (legal, psychological, medical, social, training, among others);
- To promote the victims personal development (knowledge, abilities, competences), to prevent them to fall again into victimisation;

# Model of Signalling-Identification-Integration



# **SIGNALLING-Identification-Integration**

---

- **What is intended:** To identify possible situations of trafficking
- **What to do:** Sorting and comparing situations of victimisation, by filling out the Unified Register Form, or the Signalling Guide, according to the entity to whom the situation of victimisation is brought forth to. Any suspicion may be communicated in person or by phone.
- **By whom:** Signalling may be done by any collective or individual entity, including the victim herself.
- **To whom:** to the SOS Immigrant support hotline, to the multidisciplinary team in the case of NGO or public entities with social intervention nature – or to the OPCs Focal Point – in the case of the different law enforcement, such as: the SEF (Foreigns and Border Police), PJ (Judiciary Police), PSP (Public Security Police), and GNR (Republican National Guard).

## Signalling- IDENTIFICATION -Integration

---

- **What is intended:** To confirm and characterise any situations of trafficking for further implementation of support.
- **What to do:** Qualified data collection by using the OPCs and NGO registration guides, and analysis of such data.
- **By whom:** At a first stage, by the Focal Point of the OPCs and MT. At a second stage, in which a victim of trafficking is identified, by the judicial authority or the OPC, whenever there are signs of such crime, or by the Coordinator of the National Plan Against Trafficking in Human Beings whenever there are sufficient reasons to consider the person as a victim



- In case of invalidation, the most appropriate response should be referred. In case of confirmation of the Signalling stage, the Integration stage will follow.

# Sinalling-Identification- **INTEGRATION**

**(Reception/Sheltering – Reflection Period (minimum duration 30 days, and maximum duration 60 days))**

---

- **What is intended:** To provide the victims with conditions that may enable them to “recover and escape from the influence of the authors of the offences at stake”, ensuring the satisfaction of the basic necessities and the access to the different types of supports, such as: safety; social support; psychological support; legal support; medical support; translation and interpretation support;
- **What to do:** Under Temporary Sheltering regimen, available 24h/day.
- **By whom:** by the core technical team and then widened to the Shelter and Protection Centre, foreseeing an articulation with other entities, such as: the National Health Service , Judicial-Legal System; Institute for Employment and Vocational Training; OPCs and NGO.
- **To whom:** Persons identified as victims.



# Sinalling-Identification- **INTEGRATION**

## (Support / Integration within the National Territory)

---

- **What is intended:** social, cultural and professional integration of persons who are victims, and that have chosen to remain on national territory. This (re) integration implies the promotion of skills, as well as the definition of a training path according to the characteristics and individual plan of each victim. This support foresees the development of training and social and occupational integration, a process monitored by the Shelter and Protection Centre team.
- **What to do:** To care for the victim's physical and psychological stabilization is a basic condition for working on projects of vocational training, of specific training or on programmes of occupational integration that may enable the appropriate valorisation of her potential and that may respect her will.
- **By whom:** By the technical team
- **To whom:** For sheltered victims and, exceptionally, for former residents, to which contact with the CAP team is provided, outside the CAP facilities.

# Sinalling-Identification- INTEGRATION

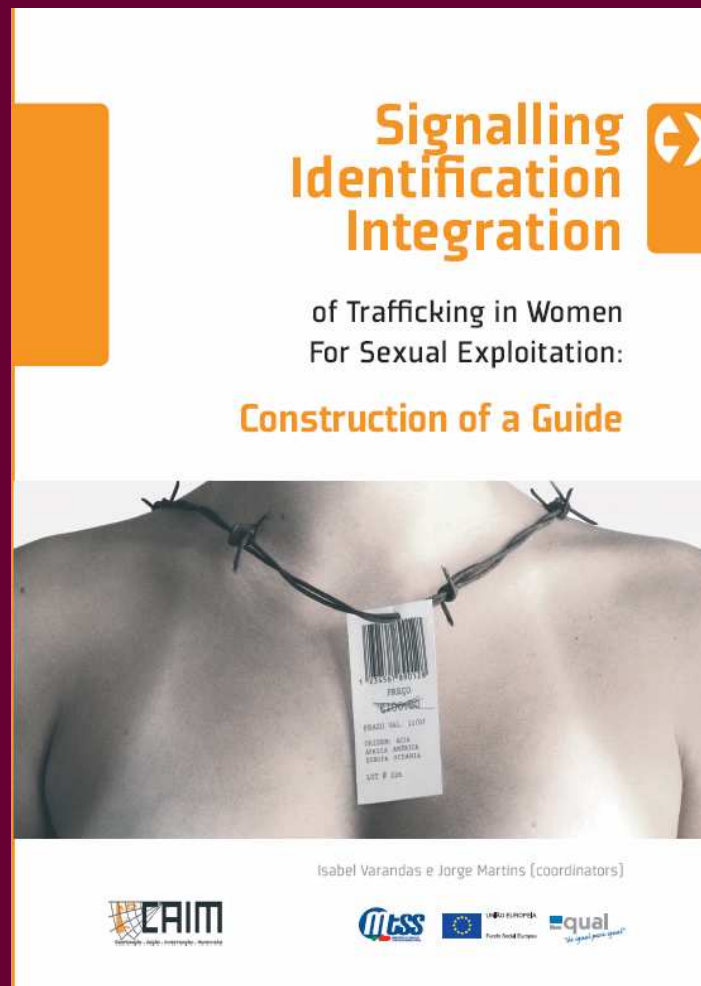
## (Supported Return)

---

- **What is intended:** to ensure the adoption of the necessary measures for sheltering, protection and safety in the country of (re) integration, in order to prevent the recurrence of situations of victimisation.
- **What to do:** Support should be provided at all times – before departure, during the journey and at the arrival at the (re) integration country, activating the interinstitutional procedures foreseen for each specific situation.
- **By whom:** by the multidisciplinary team, in articulation with the IOM (International Organisation for Migration), and with public institutions (in which consular entities may hold a relevant role), or of civil society.
- **To whom:** For sheltered victims

# Response created: Signalling- Identification-Integration of VTHB

---



# European Projects where PT is involved

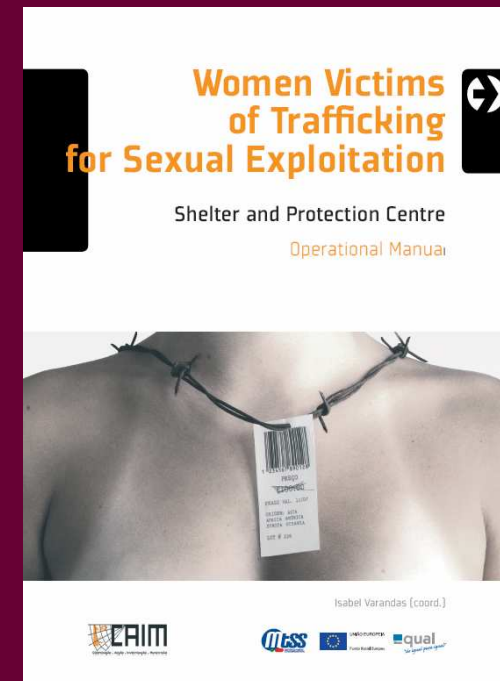
---

- *Trafficking in Human Beings: Data Collection and Harmonised Information Systems*, under the Programme Criminal Justice/Prevention of and Fight Against Crime 2007, DG JLS.
- *Development of a transnational referral mechanism for victims of trafficking between countries of origin and destination (TRM-EU)"* – Programme “Criminal Justice” – coordinated by the Department for the Rights and Equal Opportunities – Italy.
- *Promoting Transnational Partnerships - Preventing and Responding to Trafficking in Human Beings from Brazil to EU member states"* Thematic Programme of Cooperation with Third Countries in the Areas of Migration and Asylum – coordinated by – International Centre for Migration Policy Development (ICMPD).

# Welcome and Protection Centre

---

- Place which allows a protected welcome to potential victims of trafficking with specialised technical support.



# Training

---

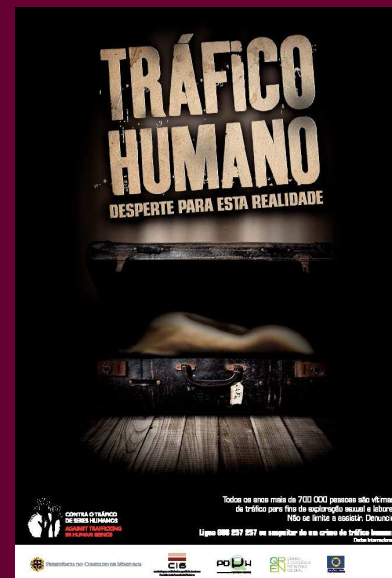
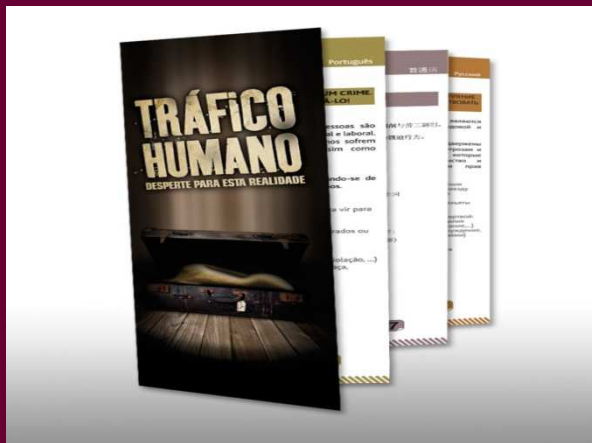
- Several Trainings have been carried out on this subject, addressed to all the agents involved on fight against THB
- Training on an International Level
- Conception of training instruments



# Sensitization/Prevention

---

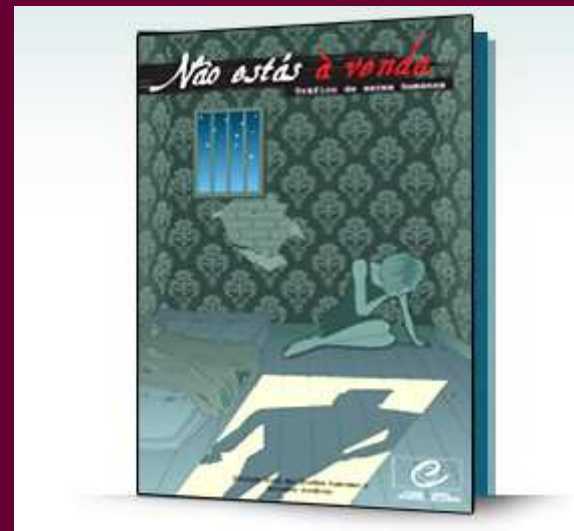
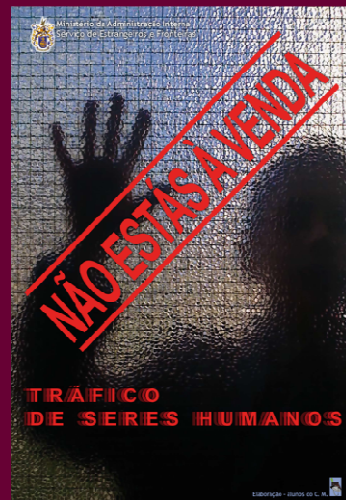
- Sensitization Campaign on THB in Oct/08 (spot tv, radio, flyers and mupis production)



# Sensitization/Prevention

---

- “You are not for sale” - Council of Europe campaign, developed by SEF in Portugal





# Sensitization/Prevention

- CAIM Project's Campaign (radio, flyers, outdoors, advertisements on newspapers, agendas)





# CONTRA O TRÁFICO DE SERES HUMANOS AGAINST TRAFFICKING IN HUMAN BEINGS



**THANK YOU**

**Manuel Albano – [mjalbano@cig.gov.pt](mailto:mjalbano@cig.gov.pt)**

**National Rapporteur**

Rua Ferreira Borges, n.º 69 2.º C

4050-253 Porto – Portugal

Tel.: + 351 22 207 43 70

