

# BASIC ROAD TRAFFIC RULES IN THE CZECH REPUBLIC

## Speed limits

The speed limit for motor vehicles with a maximum weight of up to 3.5 tonnes and buses outside the city is 90 km/h. Vehicles weighing more than 3.5 tonnes may drive at a maximum speed of 80 km/h. Motor vehicles with a weight of up to 3.5 tonnes and buses may drive on highways with a maximum speed of 130 km/h, max. 110 km/h on speedways, other vehicles max. 80 km/h. The maximum speed allowed in the city is 50 km/h; on the highways in the city 80 km/h.



## Authority of police officers in cases of unlawful conduct

Police may impose and collect fines for traffic offences on the spot. In serious cases can police officer hold back the driving licence. The police officer may demand the deposit of bail security from the transgressor as a guarantee that he or she will appear for the administrative proceedings. This rule applies only in cases that cannot be settled on the spot. If the transgressor fails to deposit the bail security, the officer is authorised to detain his or her vehicle.

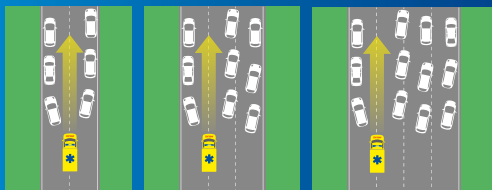


## Driving in lanes in a municipality

The drivers may use any lane for driving in municipalities with two or more lanes marked on the road in one direction.



## Rescue lane



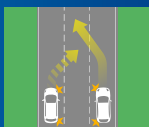
## Trams when turning

A tram that crosses the direction of travel of a vehicle moving on its right or left and indicates a change of direction, takes precedence in driving when turning or in other cases of direction change.



## Three lanes

On a road with three lanes marked on the road in one direction, the driver may move from the left lane to the middle lane only if it does not endanger the driver moving from the right lane to the middle lane.



## When is it necessary to call police officers to a car accident?

It is necessary to call the police if the visible damage on any of the participating vehicles, including transported things or cargo, exceeds CZK 100,000 (approximately EUR 4,000). Whenever a person is injured or killed, or a property of a third party or road is damaged, the police must be called to the incident.



## Roundabout

The driver entering the roundabout and driving around the roundabout does not signal a change of direction. On the contrary, when leaving the roundabout, the driver is obliged to give a signal indicating the change of direction.



## Driving in lanes outside municipality

It is a rule that the driver of the vehicle shall use the right lane. The driver can only drive in other lanes if necessary to overtake, bypass, rotate or turn off.



## Residential or pedestrian zones

In the residential area and pedestrian zone, the driver may drive at a maximum speed of 20 km/h. At the same time, the driver must pay attention to pedestrians and children on the road and must not endanger them. When leaving the residential or pedestrian zone, the driver must give priority to all vehicles currently driving on the road.



## Pedestrian crossings

Pedestrians take precedence on the crossing and the driver must stop even if the pedestrian only intends to cross the road. However, beware of the fact that the tram takes precedence over the pedestrian even at the crossing.



## Use of a mobile phone

The driver commits an offense while holding a telephone or other voice or recording device in hand. However, use of hands-free sets is allowed.

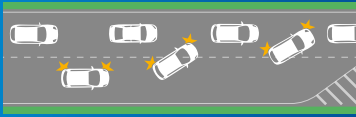


AUTOKLUB  
ČESKÉ REPUBLIKY



# BASIC ROAD TRAFFIC RULES IN THE CZECH REPUBLIC

## ■ Zip - merging



## ■ Daytime lighting of vehicles

The vehicle on the run shall always have the sidelights and low beam lights on or the daytime lights (if equipped).



## ■ Seatbelts and child car seats

Vehicle passengers are obliged to use safety belts on all seats. A suitable child seat must be used for each child up to 150 cm or 36 kg.



## ■ Winter tires

Motor vehicles, with the exemption of motorcycles, shall be between 1 November and 31 March equipped with winter tyres, in case there is a continuous layer of snow, ice or ice coating on the road or any of these can be expected.



## ■ Useful phrases

<b>Turn right/left</b>	Zahněte doprava/doleva
<b>Help!</b>	Pomoc!
<b>Call the police!</b>	Zavolejte policii!
<b>I don't understand.</b>	Nerozumím
<b>No parking!</b>	Zákaz parkování
<b>Except delivery!</b>	Mimo zásobování
<b>The delivery zone!</b>	Zásobování
<b>Only except for transport service!</b>	Jen mimo dopravní obsluhu
<b>Valid from...to</b>	Platnost od... do...
<b>Caution, change of priority!</b>	Pozor, změna přednosti v jízdě
<b>Give way to tram</b>	Dej přednost tramvaji
<b>Slippery road!</b>	Za mokra
<b>Detour!</b>	Objížďka
<b>Road works!</b>	Práce na silnici
<b>Driveway!</b>	Vjezd
<b>Exit!</b>	Výjezd
<b>A soft verge!</b>	Nezpevněná krajnice
<b>One way road!</b>	Jednosměrná ulice
<b>Accident!</b>	Nehoda
<b>No through road!</b>	Průjezd zakázán
<b>Police!</b>	Policie
<b>Firefighters!</b>	Hasiči
<b>Ambulance!</b>	Záchraná služba

## ■ Alcohol tolerance

There is a zero tolerance for driving under the influence of alcohol in the Czech Republic. This also applies to cyclists. Drivers are obliged to undergo a breath test in case of inspection. In case of a positive test result, they are required to undergo a blood test to determine the amount of alcohol in their blood.



## ■ Reflective safety vests

If the driver of a motor vehicle in an emergency leaves his or her vehicle outside the municipality, he or she shall use the safety vest. This does not apply to motorcyclists.



## ■ Distance between vehicles

A driver of a vehicle following another vehicle shall leave a sufficient safety distance behind it to avoid a collision in the event of a sudden speed reduction or abrupt stopping of the vehicle running in front of it. The recommended distance that should be maintained from the vehicle moving in front corresponds to a minimum of 2 seconds of drive.



## ■ Bicycle helmets

Cyclists under the age of 18 are required to wear a bicycle helmet and have it properly fastened during their ride.



## ■ Parking in Prague

There is a parking zone system for the residents of the city of Prague. For detailed information, please visit:

[www.parkujvklidu.cz](http://www.parkujvklidu.cz)



## ■ Motorway tolls

Vehicles with weight up to 3,5 tonnes must have an electronic vignette with effect from 1 January 2021. The vignette can be purchased at [www.edalnice.cz](http://www.edalnice.cz), or at the Czech Post Office branches and Čepro petrol stations, or in self-service kiosks.

### Electronic vignette prices:

**Annual (365 days)** – 2 300 CZK\*  
**30 days** – 430 CZK\*  
**10 days** – 270 CZK\*  
**1 day** – 200 CZK\*



\*prices valid for 2024

**ATTENTION:** The one-day highway stamp with immediate validity expires at 23:59 minutes and 59 seconds on the same day).

Vehicles with a total weight exceeding 3.5 tonnes use electronic toll via a toll unit.